

# SM SECUTECH

## SOLUTION LLP.



**YOUR ENTRANCE**  
**OUR AUTOMATION**

**DOCK LEVELER**



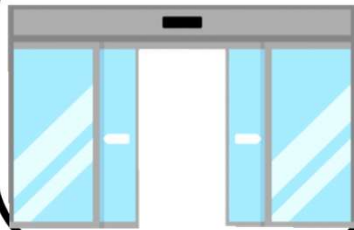
**ROLL UP DOOR**



**RISING BOLLARDS**



**AUTO DOOR**



**AUTO GATES**



**BOOM BARRIER**



# Founders Desk

**Sanjay Jaiswal and Manish Kakakatkar ,**

Having a vast experience of more than 20 years on the strengths of relevant background and rich experience in the **TECHNICAL FIELD AND MARKETING SKILLS**, they dream of growing beyond the comfort zone and to offer unique products and solutions that can be thought on a broader perspective.

Having a thorough study of products from Overseas, they both visualize a huge technology solution in India to meet our customer requirements.





- ▶ We at **SM SECUTECH** , Are Committed To deliver International Quality, Standards and Certified Products.
- ▶ We firmly believe that our Entrance Automation Solutions, meet our Customers needs within their Schedule and Budgets.

- ▶ To be s Successful Technology Company trusted by its Customers For their Products & Service Excellence,
- ▶ We Aim to deliver Innovative and Value Driven Products and Solutions.

# Join us..

**Welcome to SM Secutech**, where dynamism meets innovation!

As a B2B / B2C startup, we are dedicated to understanding and exceeding our clients' needs. Our mission is simple: to provide unparalleled entrance automation solutions and integrated services to industrial and corporate clients.

At **SM Secutech**, we specialize in streamlining **entry and exit** processes, expediting loading and unloading operations, and ensuring seamless Movements with a focus on safety and security. Our comprehensive suite of solutions is designed to optimize efficiency, enhance productivity, and eliminate hassles for our valued customers.

With a commitment to excellence and a passion for innovation, we are here to revolutionize the way businesses approach entrance automation. Join us on this journey toward a future of effortless access and unparalleled convenience.

Discover the power of **SM Secutech** Where every entrance is an opportunity, and every exit lead to success.





## **QUALITY**

We are dedicated to providing high-quality products and delivering timely services that meet and exceed customer expectations. Our commitment to precision, reliability, and responsiveness drives us to continually improve and ensure every experience reflects our high standards.

## **TEAM WORK**

We believe collaboration fuels innovation and success. By supporting one another, sharing ideas, and working toward common goals, we create a culture of trust, respect, and unity that empowers everyone to achieve more.

## **HONESTY AND INTEGRITY**

We value open, honest communication and ethical practices in every customer interaction. By being genuine, accountable, and respectful, we build lasting relationships based on trust and integrity.

## **EXCELLENCE**

We put our customers at the heart. By consistently delivering superior quality, attentive service, and tailored solutions, we strive to exceed expectations and ensure complete satisfaction every step of the way.



# PRODUCT LINE


## ENTRANCE AUTOMATION

- AUTO SLIDING GLASS DOORS
- AUTO SLIDING / SWING GATES
- BOOM BARRIERS
- ROLLING SHUTTERS
- TRIOPDS
- FLAP BARRIER

## WARE HOUSING

- DOCK LEVELER
- SECTIONAL OVERHEAD DOOR
- DOCK SHELTERS
- PVC FAST ROLL UP DOORS
- FIRE RATED DOORS
- PUFF INSULATED DOORS

## HIGH SECURITY

- RISING BOLLARDS
  - TYRE KILLER
  - ROAD BLOCKER
  - PARKING SOLUTIONS
  - CRASH RATED GATE /  
BARRIERS
  - NOISE BARRIERS
- 



# AUTOMATIC SLIDING DOORS

## Auto Sliding Door – Key Features

### Smooth Automatic Operation

- Motorized sliding with adjustable speed
- Quiet, low-vibration performance
- Seamless open/close cycle for high foot traffic

### Customizable Design

- Available in single, double, or telescopic configurations
- Frame materials: SS316, aluminum, powder-coated steel, etc.
- Glass options: clear, frosted, laminated

### Safety & Security Features

- Obstacle detection sensors (anti-crush safety)
- Emergency break-away or manual override
- Compatible with RFID, biometric, facial recognition
- Sensor-controlled to open only when needed

### Low Maintenance

- Self-lubricating rollers or guides
- Easily accessible panels for service
- Durable parts with long lifecycle (tested for 1M+ cycles)

### Weather & Environment Ready

- IP-rated components for outdoor use
- Weather seals to prevent dust, rain, or insects
- Temperature-resistant materials (-20°C to 60°C)



# AUTOMATIC SLIDING GATES

## Key Features – Motorised Sliding Gates

### Robust Motorized Mechanism

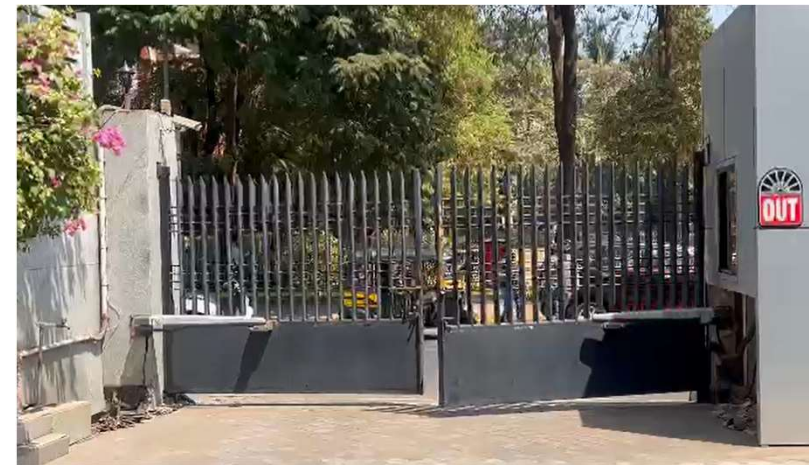
- Heavy-duty motor suitable for gates weighing up to [ 500 KG TO 8000 KG ]
- Smooth and silent operation with soft start/stop functionality
- Weather-resistant motor housing (IP65 or higher)

### Strong, Durable Construction

- Available in MS, SS304, SS316, or aluminium
- Customizable finish: powder coating, galvanization, paint, or brush polish

### Advanced Safety & Security

- Anti-crush safety sensors to prevent accidents
- Auto-stop/reverse on obstruction
- Integrated locking system (electromechanical or magnetic)
- Compatible with remote control, RFID tags, keypads, biometric systems, ANPR (Automatic Number Plate Recognition)
- Optional mobile app control or integration with smart home/building systems
- Backup power or battery options for power failure
- Manual release key in case of emergency





# RETRACTABLE GATES

## Retractable Sliding Gate – Key Features

### Telescopic/Retractable Design

- Gate panels collapse into each other to open, reducing space requirements
- Ideal for locations with limited side space compared to traditional sliding gates

- Sleek and modern appearance suitable for commercial, corporate, and residential entry points

### Sturdy & Durable Construction

- Built using galvanized steel, aluminum alloy, or stainless steel (SS304/SS316)
- Rust-resistant coating for long-term outdoor exposure
- Heavy-duty wheels and bottom guide tracks ensure smooth and stable movement
- Available in motorized (automatic) or manual models
- High-performance motors with remote control, access card, keypad, or mobile app control
- Integrated locking system to prevent forced entry
- Anti-climb design and optional spikes, sensors, or surveillance integration
- Can be connected to CCTV, intercoms, and access control systems
- Auto-reverse function if obstacle is detected during closing
- Infrared sensors, emergency stop, and overload protection
- Audible and visual warning signals (buzzer/light) during gate movement

### Ideal For:

- Corporate office premises
- Factories and warehouses
- Gated communities and apartments
- Airports, ports, hospitals, and schools



# BOOM BARRIERS

## Key Features – Automatic Boom Barriers

### Heavy-Duty Electromechanical Operation

- Fast, smooth arm movement (opening time: 1 to 6 seconds depending on model)
- Duty cycle up to 100% for high-traffic applications
- Suitable for arms up to 6–8 meters in length

### Integrated Access Control Compatibility

- Works with RFID tags, ANPR cameras, biometric scanners, keypads, and remote controls  
Seamless integration with toll systems, parking software, or security networks

### Safety Features

- Inbuilt anti-crush mechanism with auto-reverse on obstacle detection
- Safety sensors like loop detectors, photocells, and IR beams
- Emergency manual release in case of power failure

### Weather-Resistant & Durable

- IP65-rated enclosure for outdoor use
- Rust-proof, powder-coated or stainless-steel housing
- Wind-resistant arm design with counterweights or dampers
- LED arm lights for visibility at night
- Folding arm or fence arm for extra protection
- Integration with spike barriers, bollards, or gates for layered access control

### Wide Application Range

- Ideal for toll plazas, industrial entry points, residential complexes, airports, data centres, and parking lots





# AUTO ROLLING SHUTTERS

## Key Features – Automatic Rolling Shutters

### Motorized Operation

- High-torque tubular or side-mounted motors (single-phase or three-phase) Smooth and silent opening/closing
- Manual override with crank or chain in case of power failure

### Strong & Secure Build

- Available in GI (Galvanized Iron), aluminium, or SS304/SS316
- Curtain profiles can be solid, perforated, or vision-type

### Smart Automation

- Controlled via remote, key switch, mobile app, or integrated BMS
- Emergency stop button (manual or electronic)
- Self-lubricating components
- Rust-proof guide channels and powder-coated parts
- Designed for high usage with 50,000–100,000+ operational cycles
- Wind-resistant design for high-pressure zones
- Wide range of colours and finishes (powder-coated, anodized, painted)



# TRIPOD / TURNSTILE

## Tripod Turnstile – – Key Features

### Controlled Access with Three-Arm Design

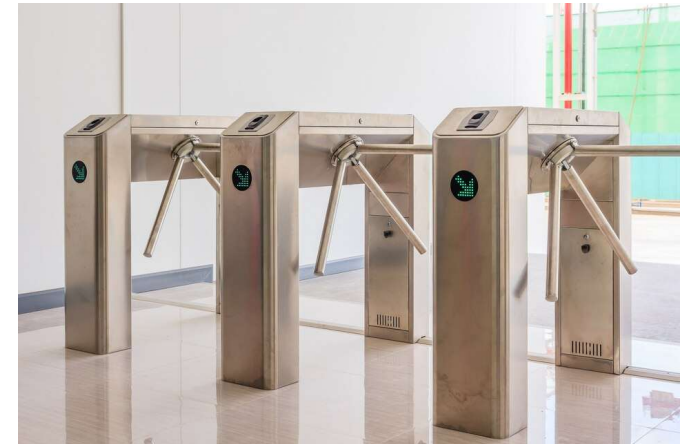
- Rotating tripod arms allow one person at a time Designed for efficient pedestrian flow control

### Smart Access Integration

- Compatible with RFID, biometric, QR code, face recognition, and card readers
- Easily integrated with visitor management and time attendance systems

### Safety & Emergency Control

- Automatic arm drop or unlock on power failure or fire alarm, Anti-panic mode for safe egress
- Made from SS304 or SS316 for durability and corrosion resistance
- Designed for indoor and outdoor use Processes 25–35 people per minute efficiently



## Flap Barrier – Key Features

### High-Speed Bi-Directional Access

- Fast open/close flaps (0.2–0.5 sec) for efficient flow , high-security applications

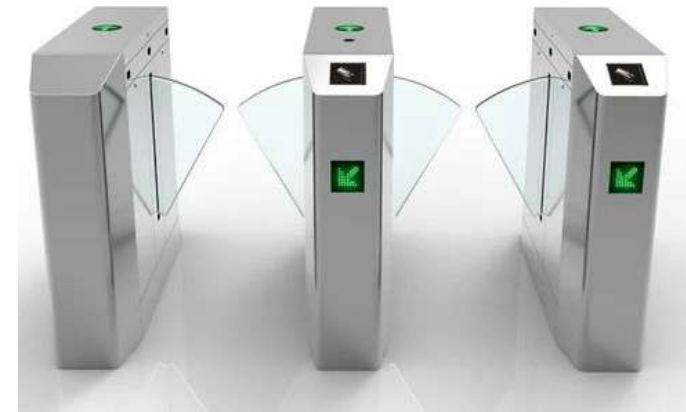
### Intelligent Access System

- Integrated with access cards, biometrics, QR scanners, and face
- Recognition , Optional camera or intercom add-on for surveillance

### Enhanced Safety Features

- Infrared sensors to prevent tailgating and unauthorized entry
- Anti-collision flaps with auto-retract on obstruction
- Fire safety integration with auto-open during emergencies

Premium look with stainless steel housing and acrylic/tempered glass flaps LED indicators for direction and status



# DOCK LEVELER

## Dock Leveller – Key Features

### Hydraulic or Mechanical Operation

- **Hydraulic type:** Smooth, automatic lifting and lowering with push-button control
  - Optional **electro-hydraulic system** for enhanced precision and safety
- High-strength steel platform with anti-skid checker plate surface
- Load capacity from **6 tons to 15+ tons**
- Telescopic or hinged lip options
- Allows bridging the gap between dock and truck bed
- Typically extends **400–500mm** into the truck

### Safety & Control Features

- **Emergency stop button** and return-to-home function
- non-return valve to prevent free fall during hydraulic failure
- LED indicators or alarm systems for operator guidance
- Sealed hydraulic units require minimal servicing
- Grease fittings and maintenance-friendly access points
- Ideal for **warehouses, logistics hubs, factories, cold storage, and retail chains**
- Custom dimensions and capacities available based on dock height and truck variety





# SECTIONAL OVERHEAD DOOR

## Sectional Overhead Door – Key Features

### Space-Saving Vertical Operation

- Opens vertically and rests under the ceiling usable interior and exterior space
- Ideal for loading bays, warehouses, fire stations, and commercial garages
- Made from insulated steel or aluminium sandwich panels (40–80mm thick)
- PU or PIR foam core for superior thermal insulation (U-value optimized)
- Optional window sections for light and visibility
- Operated via heavy-duty torsion springs and counterbalance system
- Motorized option with remote control, wall switch, or mobile app
- Soft start/stop feature for quiet and smooth motion

### Advanced Safety Mechanisms

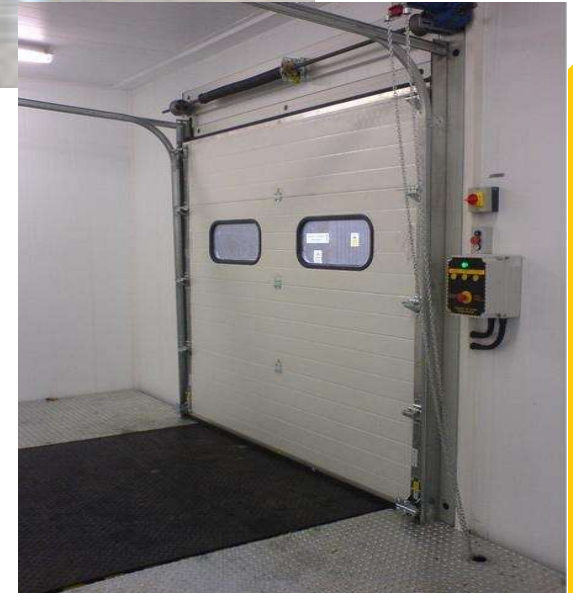
- Spring break safety device and cable break protection, Finger protection
- Safety edge sensors and photocells to prevent entrapment
- Excellent thermal performance for cold storage or temperature-controlled environments Optional wind load resistance up to Class 4 (EN 12424)

### Custom Design Options

- Available in various RAL colours and surface finishes
- Panel styles: micro-ribbed, flush, embossed, vision panels
- Customizable sizes and layouts for industrial and commercial needs

### Low Maintenance, Long Life

- Corrosion-resistant hardware and galvanized tracks Durable rollers and hinges
- Designed for 25,000–100,000+ operational cycles depending on spring rating



# DOCK SHELTERS

## Dock Shelters – Key Features

### Optimal Sealing for Loading Bays

- Creates a tight seal between the building and the truck body
- Minimizes air exchange, dust, insects, and rain infiltration
- Helps maintain internal temperatures in cold storage or climate-controlled areas
- Side and top curtains made from **high-strength, abrasion-resistant PVC or polyester fabric**
- Aluminium or galvanized steel frames that flex on truck impact and return to original position
- Accommodates a wide range of truck sizes and dock heights

### Energy Efficiency

- Prevents cold or hot air loss during loading/unloading
- Reduces HVAC energy consumption and improves facility efficiency
- Maintains hygiene by limiting contaminants and pests

### Easy Installation & Low Maintenance

- Modular design for quick mounting on existing dock openings
- Replaceable curtain sections for quick repair
- Self-draining or sloped top design to prevent water pooling

### Custom Configurations Available

- **Retractable Dock Shelters** – Flexible frame that retracts on impact
- **Inflatable Dock Shelters** – Air-powered cushions for airtight sealing
- **Cushion/foam Dock Seals** – Ideal for consistent truck sizes or limited space
- Tailored sizes and mounting styles for various vehicles and dock setups

### Ideal for:

- Warehouses Cold storage units Pharma and food-grade facilities



# PVC FAST ROLL UP DOORS

## PVC Roll-Up Doors – Key Features

### High-Speed Operation

- Opening speeds up to **1.0–2.5 m/s** (depending on model)
- Quick access for forklifts, trolleys, and personnel
- Ideal for high-traffic areas to boost operational efficiency

### Hygiene-Friendly Design

- Made from **food-grade, washable PVC** (650–1200 gsm)
- Smooth, non-porous surface prevents dirt accumulation
- Soft bottom edge or built-in **safety sensor** for anti-crash protection
- Automatic reverse if obstacle is detected during closing
- Optional transparent vision panels for visibility and safety
- Compatible with **motion sensors, radar, pull cords, remotes, RFID, and push buttons**
- Optional UPS or battery backup system for power failure operation
- Self-repairing or **self-reinserting models** available (curtain resets after impact)
- Helps maintain internal temperatures and air cleanliness
- Prevents dust, pests, and pollutants from entering clean zones
- Used at Warehouses Cold storage clean rooms Automotive and manufacturing facilities
- Supermarkets and commercial kitchens



# FIRE RATED DOORS

## Fire-Rated Doors – Key Features

### Certified Fire Resistance

- Fire-rated up to **60, 90, 120, or 180 minutes** as per UL, BS, IS standards
- Prevents fire and smoke spread between compartments
- Tested and certified by accredited labs
- Manufactured using **galvanized/stainless steel** or fire-rated timber core
- Core options: honeycomb, mineral wool, steel-stiffened, or vermiculite
- Seamless design with **intumescent seals** that expand during fire to block smoke/gas
- Available in **single, double-leaf, or sliding configurations**
- Vision panel options with fire-rated glass (wire mesh or clear)
- Customizable sizes and finishes (powder coating, primer, or SS cladding)
- Supplied with **fire-rated hardware** like hinges, locks, panic bars, door closers, and electromagnetic holders
- Self-closing mechanism to ensure door shuts automatically during fire
- Smoke seals for additional protection
- Fully compliant with local building codes, fire norms (NFPA, IS 3614, BS 476)

### Applications

- Industrial factories and warehouses IT parks and server rooms
- High-rise residential and commercial buildings Hospitals, malls, airports, and theatres





# RISING BOLLARDS

## Rising Bollards – Key Features

### Heavy-Duty Hydraulic or Electro-Mechanical Drive

- Powered by hydraulic or electro-mechanical actuators for smooth, powerful lifting/lowering
- Operating time typically 3–6 seconds, with emergency fast-raise options
- Strong & Secure Construction
- Made from high-grade steel (SS304/SS316 or powder-coated carbon steel)
- Impact resistance rating up to K4/K8/K12 or PAS 68 for anti-ram applications
- Bollard diameter typically ranges from 220mm to 350mm, with heights from 600mm to 1000mm
- Integrated with RFID readers, license plate recognition (ANPR), biometrics, remotes, keypads, or access cards
- Central control system for multiple bollards with scheduling options
- Remote operation via control room or mobile app integration
- Obstacle detection sensors with auto-stop or auto-reverse functions
- LED light rings, reflective strips, or sound alarms for visibility
- Manual override system in case of power failure (removable handle or hydraulic release)
- IP67/IP68 rated for dust and water resistance
- Surface or flush-mounted pit design
- Modular control panels and replaceable hydraulic units
- Routine servicing only required for high-impact installations
- Real-time monitoring and logging of access activity

### Application Areas

- Airports and seaports Government buildings and embassies  
Hotels and business parks Pedestrian zones and restricted roads





# TYRE KILLER

## Tyre Killer – Key Features

### Anti-Terror Vehicle Immobilization

- Designed to instantly puncture or shred tires of unauthorized vehicles
- Effective against high-speed intrusion attempts (up to 80 km/h+)
- Spike height: 100–150 mm, spaced to ensure multiple tire hits
- Built with hardened steel spikes and a robust steel frame
- Impact-rated, often tested to K4, K8, or K12 standards
- Suitable for defines zones, embassies, data centres, power plants, and border security
- Hydraulic, pneumatic, or electro-mechanical drive systems
- Manual drop-down models available for low-traffic or emergency-only zones
- Fast deployment/retraction time: 2–5 seconds

### Smart Control Integration

- Controlled via push button, remote control, RFID, access card, or number plate recognition systems (ANPR)
- Weatherproof design with IP67/IP68 protection rating

### Applications

- Military & defence bases Airports, seaports, and customs checkpoints  
Critical infrastructure (nuclear plants, refineries, data centres)  
High-risk commercial or government buildings Border crossings and sensitive checkpoints



# PARKING SOLUTION

## Camera-Based Parking Solution with Parking Paint – Key Features

### ANPR (Automatic Number Plate Recognition) System

- High-definition cameras read vehicle license plates for automated entry and exit
- Fully contactless access – no tokens, cards, or human intervention needed
- Integrated with digital payment systems, allowing prepay or auto-billing

### Parking Space Marking (Parking Paint)

- High-visibility paint markings define lanes, bays, directional flow, and reserved spots
- Durable, weather-resistant thermoplastic or epoxy-based paints
- Includes: Numbered bays for easy identification, Directional arrows for traffic flow
  - Color-coded zones (e.g., VIP, EV charging, handicapped, visitor)
  - Reflective paint for visibility at night or in low-light areas

### Sensor less Real-Time Space Monitoring

- With overhead or pole-mounted cameras, the system can detect:
  - Occupied vs. vacant spots based on real-time visual recognition
  - Auto-assign available space to incoming vehicles
- Optional LED display boards to guide drivers to available slots

### Centralized Parking Management Software

- Live dashboard for occupancy tracking, vehicle logs, and revenue analytics
- Supports remote monitoring and integration with mobile apps
- Notifications for blacklisted vehicles, overstays, or unauthorized parking

### Seamless Digital Payment Integration

- Camera logs entry/exit times and triggers auto-payment on exit
- Supports UPI, credit/debit cards, FASTag, mobile wallets, or app-based billing
- Ideal for subscription-based, pay-per-use, and visitor parking

### Security & Compliance

- High-resolution camera snapshots of every entry and exit
- Audit logs, photo verification, and time-stamped vehicle tracking
- Parking rules, lane direction, and safety zones reinforced with paint-based guidance

### Smart Connectivity & Integration

- Integrates with:
  - Boom barriers, traffic lights, visitor management
  - Access control systems (RFID/QR/ANPR hybrid setups)
  - Mobile apps for bookings, space availability, and live navigation

**Best Suited For:** Shopping malls, hotels, and smart buildings Airports, corporate offices, hospitals

- Residential societies with visitor parking Smart cities and government infrastructure projects



# NOISE BARRIERS

## Noise Barriers – Key Features

### High Acoustic Performance

- Designed to absorb or deflect noise from traffic, trains, factories, or commercial areas
- Typical noise reduction: 20 dB to 35 dB depending on design and materials
- Conforms to international acoustic standards (e.g., EN 1793, ASTM E90)

### Durable & Weather-Resistant Materials

- Common materials include:
  - Aluminium or galvanized steel panels
  - Polycarbonate or acrylic (transparent options)
- Can include art panels, green walls (vegetated barriers), or transparent sections to preserve views
- Suitable for use in urban, residential, and commercial settings
- Optional sound-absorbing fill (rock wool, glass wool) for enhanced performance

### Applications

- Highways, expressways, and flyovers
- Railway lines and metro corridors
- Industrial and logistics parks
- Airports, factories, and power plants
- Residential areas near noise-generating zones

### Structural Stability

- Engineered for wind loads, seismic activity, and vehicular impacts
- Mounted on steel columns, concrete bases, or fixed directly to existing walls/fences
- Long service life (15–25 years) with minimal maintenance

### Standards & Certifications

- Complies with ISO, ASTM, EN standards for noise attenuation
- Fire-rated and impact-resistant models available
- Certified by environmental and infrastructure authorities (e.g., NHAI, RDSO)



## ACHIVEMENTS

### Major Milestone: First Crore-Plus Projects Delivered

Last year, we proudly done **two high-value projects** that mark a significant step in our growth journey:

**Supply & Installation of Rising Bollards** – A high-security solution for critical infrastructure.

**Design & Delivery of SS316 Automated Sliding Gates** – A premium-grade solution for industrial-grade access control, featuring advanced automation and corrosion-resistant materials.

**Combined Project Value:** Over ₹1 Crore

These projects showcase our ability to deliver **engineering excellence, custom automation, and reliable project execution** at scale — and reflect the growing trust our clients place in us.



## ASSOCIATE PARTNERS



ENTRANCE AND GATE AUTOMATION



ENTRANCE AND GATE AUTOMATION



HIGH SECURITY PRODUCTS



ACCESS AND SOFTWARE SOLUTIONS



HIGH SPEED ROLL UP DOORS



DOCK BAY SOLUTIONS



SECTIONAL OVERHEAD DOORS



# CLIENT LIST



# CLIENT LIST



# CLIENT LIST



## CLIENT LIST



**AND MANY MORE .....**

# Future Goals

**Build a solid client base** – Aim to secure more recurring clients or major big size / value projects.

•**Establish brand presence** – Through a professional website, portfolio, and social media presence.

•**Refine core services** – Focus on our niche and ensure high-quality delivery.

•**Develop internal processes** – Standardize project management, communication, and documentation.

•**Connect with dealer partner network** – Build a network of qualified dealers or distributors to expand our market reach, improve service and delivery, and scale faster.





**Address:**

**SM SECUTECH SOLUTIONS LLP**

Solaris - 1 , Opp Sanofi,  
Saki Vihar Road , Andheri East  
Mumnai - 400072



**Contact Number:**

+91 7045757043  
+91 7045757053



**Email Address:**

[sales@smsecutech.com](mailto:sales@smsecutech.com)



**YOUR ENTRANCE**  
**OUR AUTOMATION**

**Thank  
you**